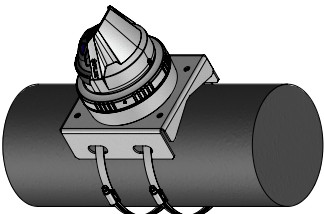
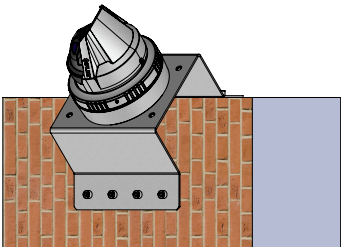


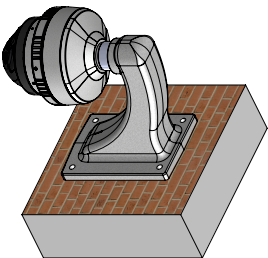
WALL MOUNT ASSY - GEN-X SERIES
SHEET 3



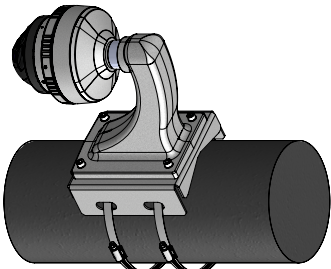
POLE MOUNT ASSY - GEN-X SERIES
PN (421-0067-00)
SHEET 3



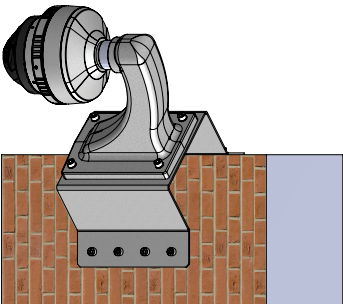
CORNER MOUNT ASSY - GEN-X SERIES
PN (421-0066-00)
SHEET 4



PENDANT MOUNT KIT - GEN-X SERIES
PN (421-0069-00)
SHEET 3/6

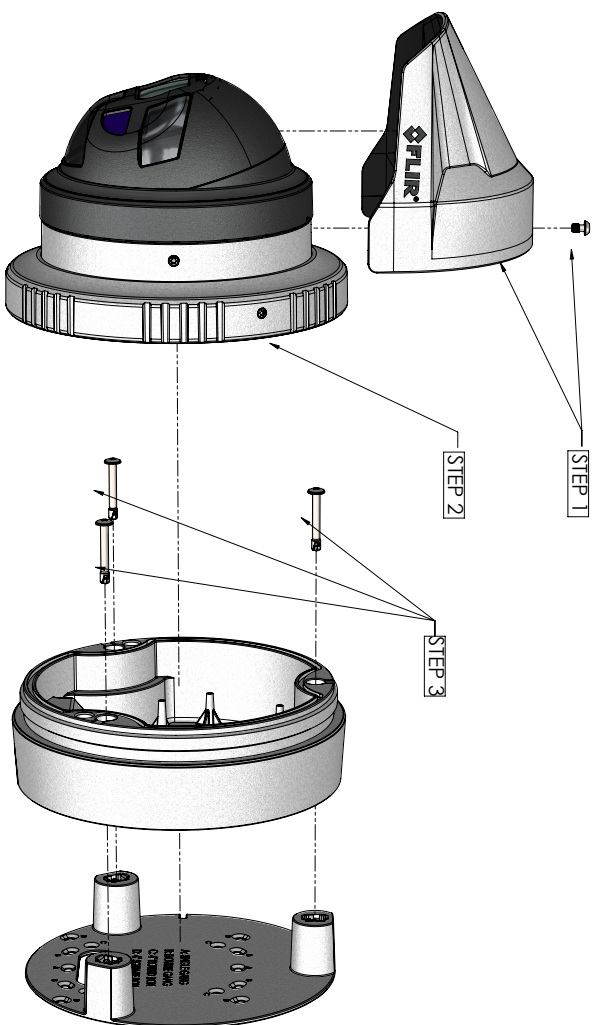


PENDANT MOUNT KIT - GEN-X SERIES
PN (421-0069-00)
POLE MOUNT KIT - GEN-X SERIES
PN (421-0067-00)
SHEET 6



PENDANT MOUNT KIT - GEN-X SERIES
PN (421-0069-00)
CORNER MOUNT KIT - GEN-X SERIES
PN (421-0066-00)
SHEET 6

THIRD ANGLE PROJECTION		THIS DOCUMENT CONTAINS PROPRIETARY INFORMATION OF FLIR SYSTEMS, INC. THIS INFORMATION MUST BE MAINTAINED IN CONFIDENCE AND USED ONLY IN A MANNER CONSISTENT WITH THE DOCUMENTATION AND ANY FLIR'S WRITTEN CONSENT.	
		THIS DOCUMENT IS CONTROLLED TO FLIR TECHNOLOGY LEVEL 2. THE INFORMATION CONTAINED IN THIS DOCUMENT PERTAINS TO FLIR USE OF PRODUCT CONTROLLED FOR EXPORT BY THE EXPORT ADMINISTRATION AUTHORITY. IT IS NOT TO BE DISCLOSED OR REPRODUCED IN ANY MANNER WITHOUT THE WRITTEN CONSENT OF FLIR SYSTEMS, INC. AUTHORIZATION IS NOT REQUIRED PRIOR TO EXPORT OR TRANSFER TO FOREIGN PERSONS OR PARTIES UNLESS OTHERWISE PROHIBITED.	
METRIC	INTERPRET DRAWING PER ASME Y14.5M-1994	UNLESS OTHERWISE SPECIFIED SURFACE FINISH IS 125	UNLESS OTHERWISE SPECIFIED ALL DIMENSIONS ARE IN INCHES. DO NOT SCALE DRAWING.
ANGULAR = ±13°	FILE TOLERANCE = ±0.0005	UNLESS OTHERWISE SPECIFIED ALL DIMENSIONS ARE IN INCHES. DO NOT SCALE DRAWING.	UNLESS OTHERWISE SPECIFIED ALL DIMENSIONS ARE IN INCHES. DO NOT SCALE DRAWING.
FINISH	SEE NOTE 1	PROJECT NO.	DATE
SEE NOTE 2	DATE	APPROVALS	DATE
UNLESS OTHERWISE SPECIFIED ALL DIMENSIONS ARE IN INCHES. DO NOT SCALE DRAWING.	UNLESS OTHERWISE SPECIFIED ALL DIMENSIONS ARE IN INCHES. DO NOT SCALE DRAWING.	UNLESS OTHERWISE SPECIFIED ALL DIMENSIONS ARE IN INCHES. DO NOT SCALE DRAWING.	UNLESS OTHERWISE SPECIFIED ALL DIMENSIONS ARE IN INCHES. DO NOT SCALE DRAWING.
SCALE 1:4	PRINTED 10/18/2018	SHEET 1 OF 6	MODEL NUMBER 427-0100-0X-28

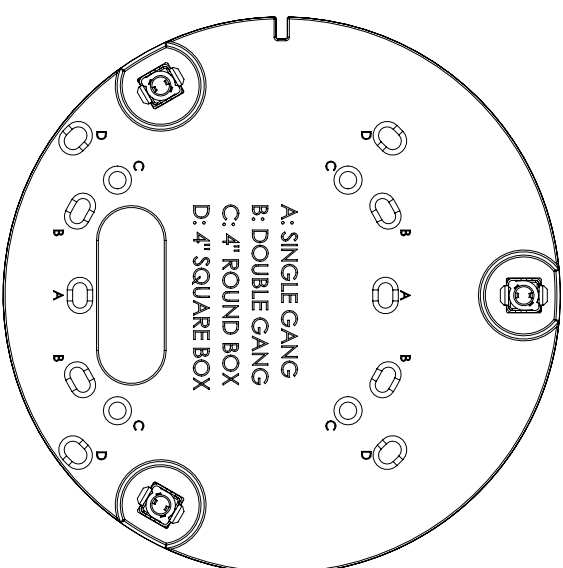


ASSEMBLY STEPS:

1. UNSCREW CAPTIVE FASTENER AND REMOVE EYELED
2. UNSCREW CAMERA LOCKING RING
3. RELEASE 1/4 TURN FASTENERS FROM EDGE OF BACK BOX AND PULL PIECES APART

NOTE:

ALL SHOWN FASTENERS IN STEPS 1/3 ARE CAPTIVE. THEY DO NOT LEAVE SURFACE. SHOWN PROJECTED FOR REFERENCE ONLY.



DETAIL VIEW OF MOUNTING BACK PLATE

PN: 261-2795-00

ALL SUBSEQUENT MOUNTING ACCESSORIES MOUNT USING HOLE PATTERN C

Mounting Backplate Access Instructions
Satos Security Camera Family

THIS DOCUMENT IS CONTROLLED TO FLIR TECHNOLOGY LEVEL 2. THE INFORMATION CONTAINED IN THIS DOCUMENT PERTAINS TO A DUAL USE PRODUCT CONTROLLED FOR EXPORT BY THE EXPORT ADMINISTRATION AND IS NOT TO BE RELEASED OR DISCLOSED TO ANY OTHER PERSON OR ENTITY WITHOUT THE WRITTEN AUTHORIZATION OF THE U.S. DEPARTMENT OF COMMERCE. AUTHORIZATION IS NOT REQUIRED PRIOR TO EXPORT OR TRANSFER TO FOREIGN PERSONS OR PARTIES UNLESS OTHERWISE PROHIBITED.



FLIR Systems, Inc.
6780 Hodgson Ave.
Goleta, CA 93117

SIZE	CODE	PIECE	REV
D	064Y2	427-0100-0X-00	2

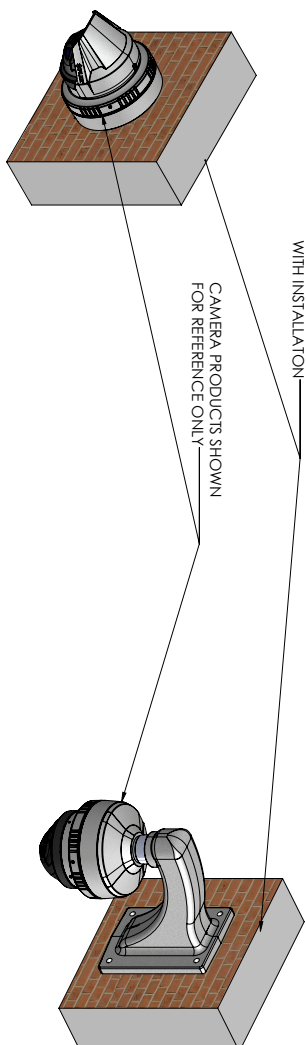
SCALE 1:1 | PRINTED: 10/18/2018 | SHEET 2 OF 6

2

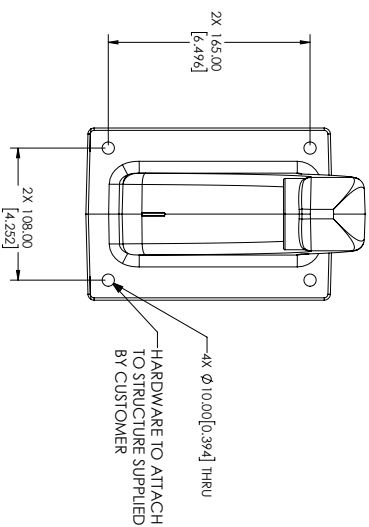
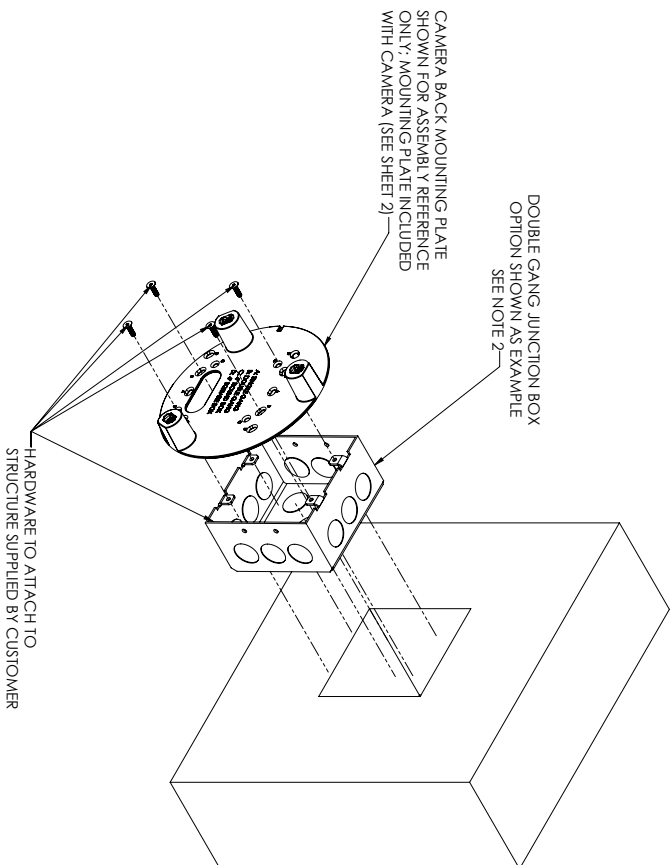
MODEL NUMBER: 427-0100-0X-00 SATOS MOUNTING ACCESSORIES

NOTES: UNLESS OTHERWISE SPECIFIED

1. THIS SHEET ONLY PROVIDES INSTRUCTIONS FOR DIRECT CAMERA MOUNTING. NO MOUNT KIT INCLUDED
2. GEN-X SECURITY CAMERA HAS POSSIBILITY TO MOUNT DIRECTLY TO:
 1. SINGLE GANG JUNCTION BOX
 2. DOUBLE GANG JUNCTION BOX
 3. 4" ROUND BOX
 4. 4" SQUARE BOX
 5. DIRECTLY TO WALL



DIRECT MOUNT TO WALL OPTION



Wall Mounting Options

PROPRIETARY - FLIR SYSTEMS, INC.

THIS DOCUMENT IS CONTROLLED TO FLIR TECHNOLOGY LEVEL 2. THE INFORMATION CONTAINED IN THIS DOCUMENT PERTAINS TO A DUAL USE PRODUCT CONTROLLED FOR EXPORT BY THE EXPORT ADMINISTRATION REGULATIONS (EAR). DIVERSION CONTRARY TO U.S. LAW IS PROHIBITED. NO DEPARTMENT OF COMMERCE AUTHORIZATION IS NOT REQUIRED PRIOR TO EXPORT OR TRANSFER TO FOREIGN PERSONS OR PARTIES UNLESS OTHERWISE PROHIBITED.

METRIC



SIZE	CAGE	PIECE PART.
D	064Y2	N/A

SCALE 1:2 PRINTED: 10/18/2018 SHEET 3

∞

7

9

5

4

3

2

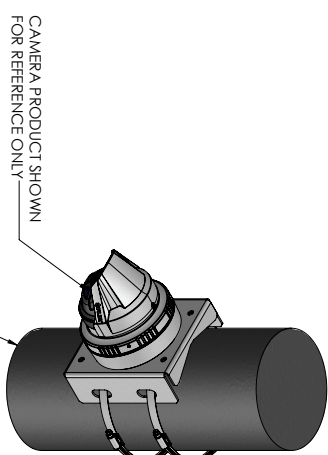
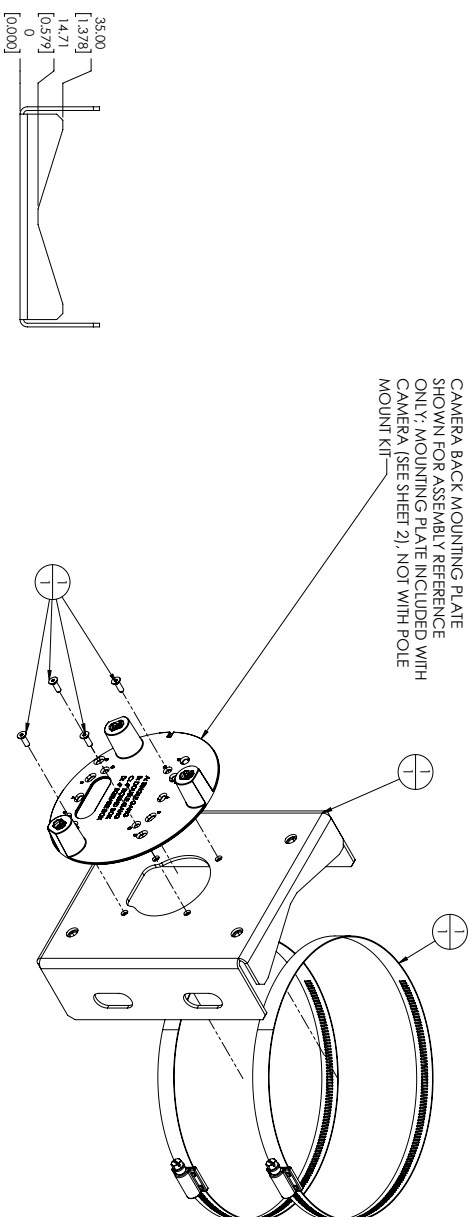
SOLIDWORKS MC
MODEL REVISION

NOTES: UNLESS OTHERWISE SPECIFIED

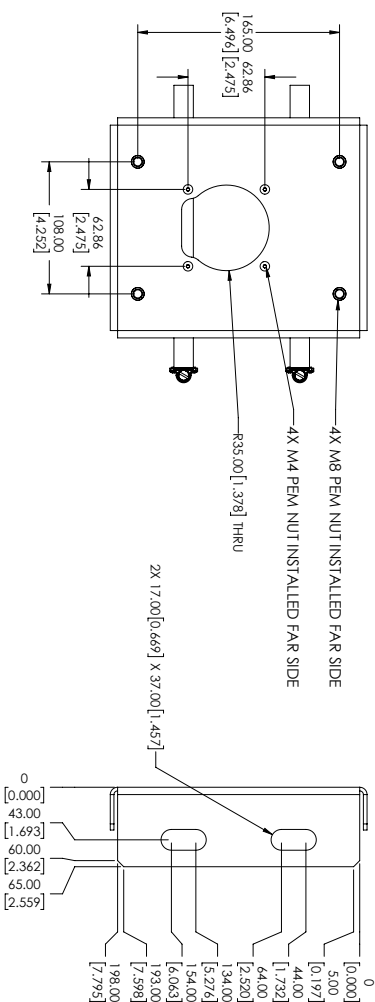
1. POLE ADAPTER ACCOMMODATES Ø150-230mm [6.0-9.0IN] POLE
2. HARDWARE (BOM ITEMS 1) INCLUDED IS ENOUGH TO ATTACH A SINGLE GEN X SERIES CAMERA1. POLE ADAPTER ASSY DOES NOT ALLOW FOR ATTACHING TWO (OR MORE) CAMERAS AT THE SAME TIME.

GEN-X POLE MOUNT KIT ITEM LIST

1. 4X M4x0.7x12 Socket FCHS
2. 2X BAND CLAMP
3. 1X POLE MOUNT PLATE 261-2865-00
4. 4X M8x1.25x22 SCHS
5. 4X M8 FLAT WASHER



STRUCTURE MATERIAL VARIES
WITH INSTALLATION_____



1	421-0067-00	POLE MOUNT KIT	1
QTY.	PART NUMBER	DESCRIPTION	ITEM

Pole Mount Kit Saros Security Camera Family

PROPRIETARY - FLIR SYSTEMS, INC

THIS DOCUMENT IS CONTROLLED UNDER E.O. 12958, WHICH IS SUPERSEDED BY E.O. 13526. THE INFORMATION CONTAINED IN THIS DOCUMENT PERTAINS TO A DUAL-USE PRODUCT CONTROLLED FOR EXPORT BY THE EXPORT ADMINISTRATION REGULATIONS (EAR). DIVERSION CONTRARY TO U.S. LAW IS PROHIBITED. U.S. DEPARTMENT OF COMMERCE AUTHORIZATION IS NOT REQUIRED PRIOR TO EXPORT OR TRANSFER TO FOREIGN PERSONS OR PARTIES UNLESS OTHERWISE PROHIBITED.



FLIR Systems, Inc.
6769 Hollister Ave
Goleta, CA 93117

SIZE	CAGE	PIECE PART
D	064Y2	421-0067-00
SCALE 1:2	PRINTED: 10/18/2018	SHEET 4 0

2 SOLUTIONS MODEL: 427-01000A-26 SAMSUNG MOBILE ACCESSORY
MODEL REVISION:

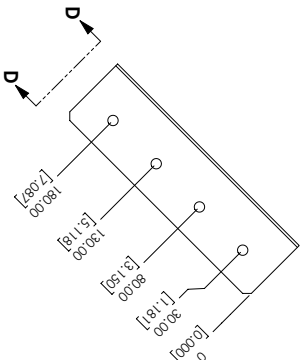
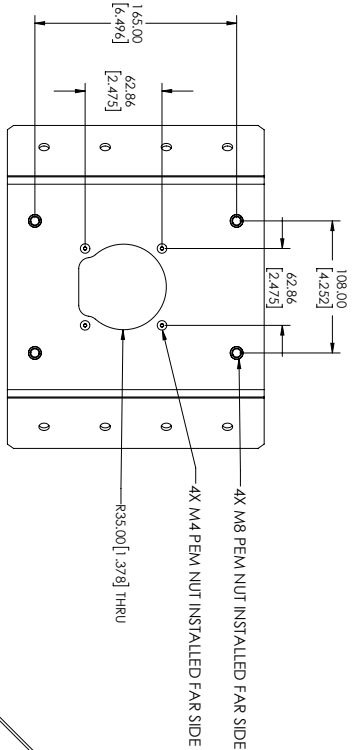
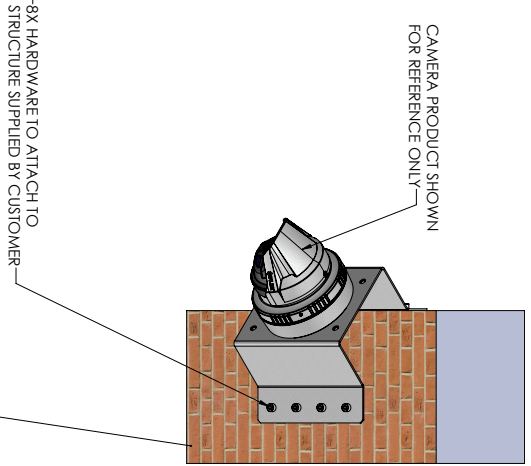
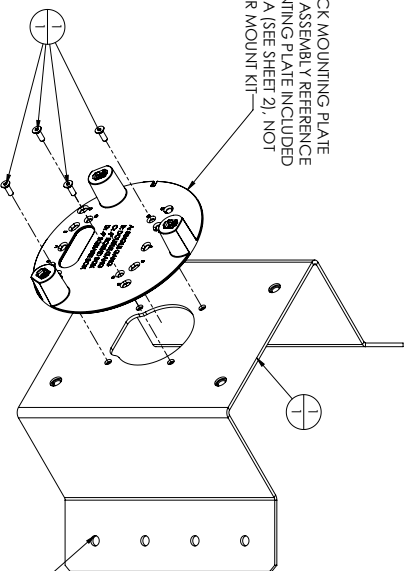
NOTES: UNLESS OTHERWISE SPECIFIED

1. HARDWARE (BOM ITEMS 1) INCLUDED IS ENOUGH TO ATTACH A SINGLE GEN X SERIES CAMERA). CORNER ADAPTER ASSY DOES NOT ALLOW FOR ATTACHING TWO (OR MORE) CAMERAS AT THE SAME TIME.

GEN X CORNER MOUNT KIT ITEM LIST

- 1. 4X M4x0.7x1.2 SOCKET FCHS
- 2. 1X CORNER MOUNT PLATE 261-2864-00
- 3. 4X M8x1.25x22 SCHS
- 4. 4X M8 FLAT WASHER

CAMERA BACK MOUNTING PLATE SHOWN FOR ASSEMBLY REFERENCE ONLY; MOUNTING PLATE INCLUDED WITH CAMERA (SEE SHEET 2). NOT WITH CORNER MOUNT KIT



VIEW D-D

BOTH 45° FLANGES HAVE IDENTICAL DIMENSIONS

QTY.	PART NUMBER	DESCRIPTION	ITEM
1	421-0066-00	CORNER MOUNT KIT	1

Corner Mount Kit
Saros Security Camera Family

PROPRIETARY - FLIR SYSTEMS, INC.

THIS DOCUMENT IS CONTROLLED TO FLIR TECHNOLOGY LEVEL 2. THE INFORMATION CONTAINED IN THIS DOCUMENT PERTAINS TO A DUAL USE PRODUCT CONTROLLED FOR EXPORT BY THE EXPORT ADMINISTRATION AND IS NOT TO BE RELEASED OR DISCLOSED TO ANY OTHER PERSON OR ENTITY WITHOUT THE WRITTEN AUTHORIZATION OF FLIR SYSTEMS, INC. OR ITS SUBSIDIARIES. NO PART OF THIS DOCUMENT IS TO BE REPRODUCED OR TRANSMITTED IN ANY FORM OR BY ANY MEANS, ELECTRONIC OR MECHANICAL, INCLUDING PHOTOCOPYING, RECORDING, OR BY ANY INFORMATION STORAGE AND RETRIEVAL SYSTEM, WITHOUT THE WRITTEN AUTHORIZATION OF FLIR SYSTEMS, INC. OR ITS SUBSIDIARIES. THIS DOCUMENT IS THE PROPERTY OF FLIR SYSTEMS, INC. AND IS LOANED TO YOUR COMPANY FOR YOUR COMPANY'S USE ONLY. IT IS NOT TO BE DISTRIBUTED OUTSIDE YOUR COMPANY. IT IS TO BE DESTROYED WHEN NO LONGER NEEDED. NO PART OF THIS DOCUMENT IS TO BE REPRODUCED OR TRANSMITTED IN ANY FORM OR BY ANY MEANS, ELECTRONIC OR MECHANICAL, INCLUDING PHOTOCOPYING, RECORDING, OR BY ANY INFORMATION STORAGE AND RETRIEVAL SYSTEM, WITHOUT THE WRITTEN AUTHORIZATION OF FLIR SYSTEMS, INC. OR ITS SUBSIDIARIES.

NOTES: UNLESS OTHERWISE SPECIFIED

1. HARDWARE (BOM ITEMS 1) INCLUDED IS ENOUGH TO ATTACH A SINGLE GEN X SERIES CAMERA). PENDANT MOUNT SHROUD KIT DOES NOT ALLOW FOR ATTACHING TWO (OR MORE) CAMERAS AT THE SAME TIME.
2. SAN'S ARM OPTION AVAILABLE PENDANT MOUNT SHROUD KIT (PN: 421-0068-00) SOLD WITHOUT PENDANT MOUNT ARM (PN: CX-ARMX-G3)

GEN-X PENDANT MOUNT KIT ITEM LIST

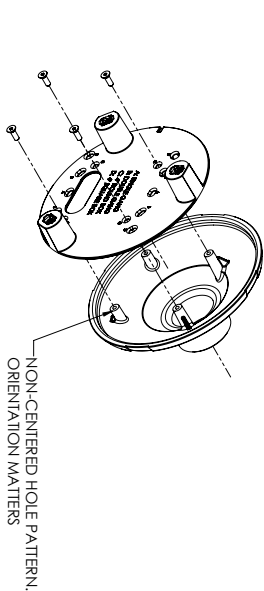
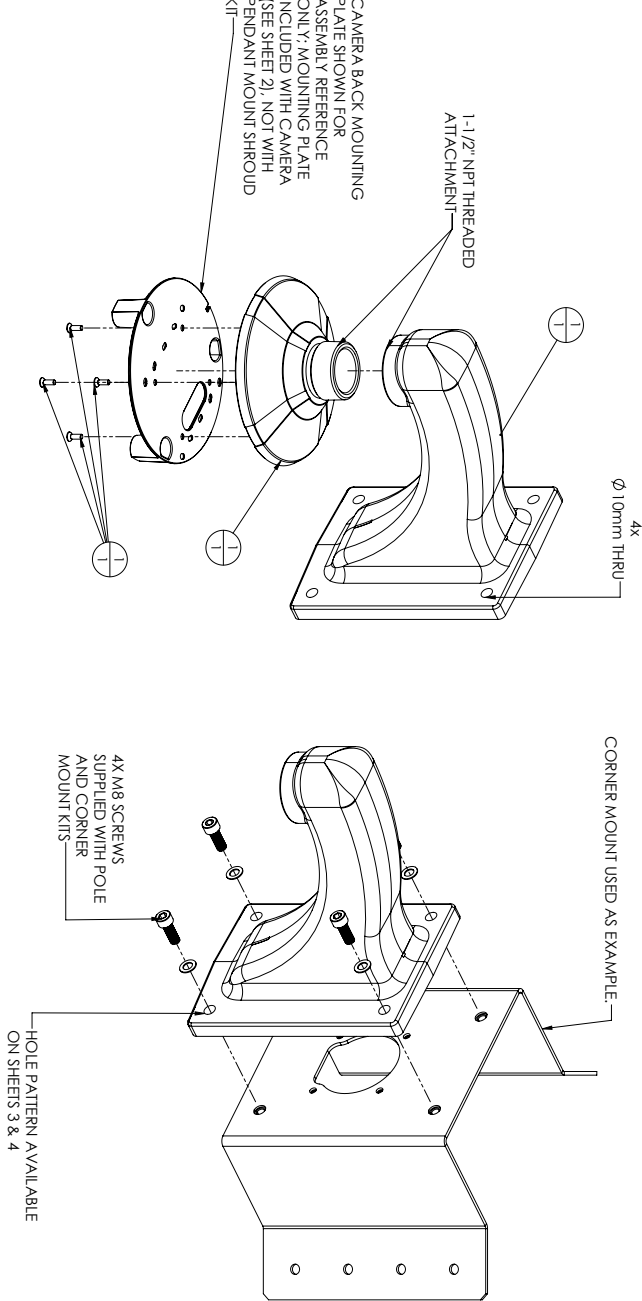
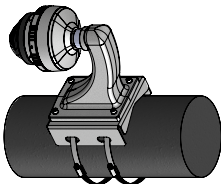
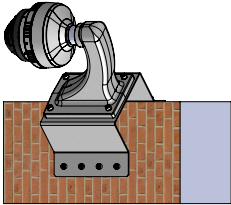
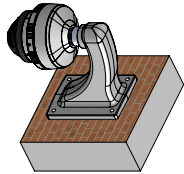
1. 4X M4X0.7X12 SOCKET FCHS
2. 1X PENDANT MOUNT SHROUD PN: 261-2866-00
3. 1X PENDANT MOUNT ARM PN: CX-ARMX-G3

CAMERA PRODUCT SHOWN FOR REFERENCE ONLY

STRUCTURE MATERIAL VARIES WITH INSTALLATION

PENDANT ARM IS ABLE TO ATTACH TO:

1. DIRECT TO WALL
SEE SHEET 5
2. GEN-X CORNER MOUNT KIT
PN: 421-0066-00
SEE SHEET 4
3. GEN-X POLE MOUNT KIT
PN: 421-0067-00
SEE SHEET 3



QTY.	PART NUMBER	DESCRIPTION	ITEM
1	421-0069-00	PENDANT MOUNT KIT	1

Pendant Mount Kit
Saras Security Camera Family

PROPRIETARY - FLIR SYSTEMS, INC.

THIS DOCUMENT IS CONTROLLED TO FLIR TECHNOLOGY LEVEL 2. THE INFORMATION CONTAINED IN THIS DOCUMENT PERTAINS TO A DUAL USE PRODUCT CONTROLLED FOR EXPORT BY THE EXPORT ADMINISTRATION AND IS NOT TO BE RELEASED OR DISCLOSED TO ANY PERSON OR ENTITY, INCLUDING THE U.S. DEPARTMENT OF COMMERCE AUTHORIZATION IS NOT REQUIRED PRIOR TO EXPORT OR TRANSFER TO FOREIGN PERSONS OR PARTIES UNLESS OTHERWISE PROHIBITED.



FLIR Systems, Inc.
6780 Hodgson Ave.
Goleta, CA 93117

SIZE CODE REV
D 064Y2 421-0069-00
SCALE 1:2 PRINTED 10/18/2018 SHEET 6 OF 6