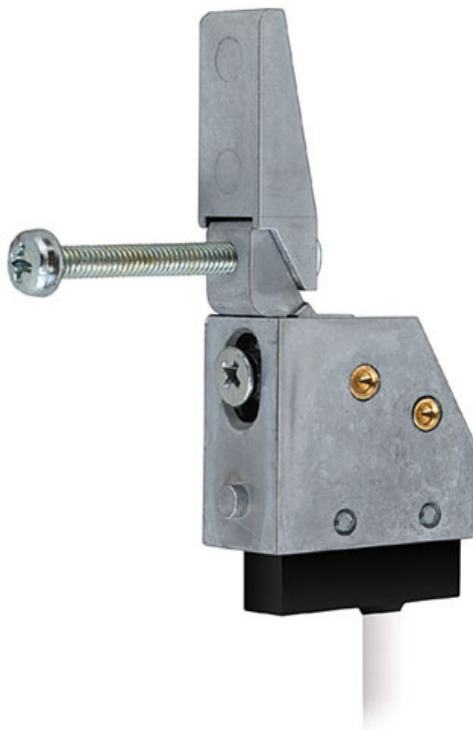


Bolt switch contact

878-----00



Due to the rotary-mounted switch lever there are no dead bolt penetration restrictions. The slim design and the mounting screw provided enable assembly through the dead bolt cutout even in existing steel frames without striking plate. It can also be retrofitted into existing built-in frames.

Overview of Advantages

- Pivot-mounted switch lever
- The slim design and the supplied mounting screw also enable the bolt switch contact to be installed in existing steel door frames without striking plates
- It can also be retrofitted into existing built-in frames.

Scope of delivery

- Bolt switch contact

Technical data	
Switching contact	Change-over contact
Bolt throw	nonrestricted
Class of protection	IP 54
Response path	3 mm
Connecting cable	4 m
Input operating voltage	25 V AC/DC
Article number	
878-----00	

